



*Victory*

THE  
LEISURE HOME  
COLLECTION  
2018



# WELCOME

## LUXURIOUS LEISURE HOMES CREATED WITH YOU IN MIND

Our 2018 collection is our most innovative and creative yet, with a range of new models and layouts alongside some refreshed popular favourites. This year we have also introduced an extended range of options for customisation so that you can tailor your design to suit your needs.

With 17 layouts across six ranges, each packed with new design features, and each with their own unique and beautiful style, we are sure there will be a Victory Leisure Home for you.

Our skilled team work tirelessly each year to launch a range that is great value for money. We are proud of what we have achieved this year and hope that you will be equally proud to own one of our lovingly designed leisure homes.

For more information please take a look at our website, where you can now take a virtual tour around each model.

[www.victoryleisurehomes.co.uk](http://www.victoryleisurehomes.co.uk)

Peter T. Nevitt  
Managing Director

GROVEWOOD LUX  
38 - 2 BED • 40 - 2 BED • 40 - 3 BED

4

MILLFIELD  
38 - 2 BED • 39 - 3 BED

6

BELMOR  
33 - 2 BED • 36 - 2 BED • 38 - 2 BED • 39 - 3 BED

8

BELMORE CL  
38 - 2 BED • 38 - 3 BED

10

ECHO  
28 - 2 BED • 33 - 2 BED • 36 - 2 BED • 36 - 3 BED

12

TORBAY  
35 - 2 BED • 37 - 3 BED

14

Measurements

15

Construction

16

Two year warranty

16

Optional extras

17

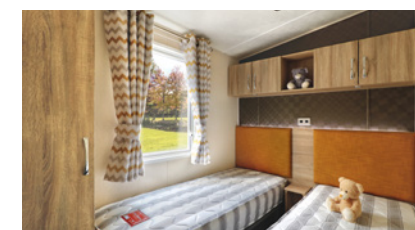
Important information

17

Lodge collection

18





▲ Grovewood Lux 38, 2 bedrooms (12'6" wide)



▲ Grovewood Lux 40, 2 bedrooms (12'6" wide)



▲ Grovewood Lux 40, 3 bedrooms (12'6" wide)



# GROVEWOOD LUX

## LUXURIOUS LEISURE HOME LIVING

With new models added this year, the Grovewood Lux builds on its success with a design update and upgraded features including a full size bath and separate shower cubicle. The Grovewood Lux also benefits from beautiful sliding patio doors, giving easy access to the outside from the living area, a music centre as standard, and SoCozeee mattresses for a comfortable night's sleep.

### MAIN FEATURES

- 12' 6" wide
- uPVC double glazing with Low-E glass and coloured frames
- Combi boiler central heating with room thermostat control
- Integrated microwave
- Integrated dishwasher
- Integrated fridge/freezer
- Insulated 50mm external walls
- Insulated floor with insulation to all exposed water pipes
- Artefoam high performance cladding
- Externally vented cooker hood with light
- Coffee table
- Close-coupled ceramic toilets with dual flush
- Vaulted ceilings throughout
- Steel pantile peaked insulated roof
- Voile curtains to most windows
- Domestic gutters with rainwater fall pipes
- Fusion fully galvanised chassis with front and rear use
- Colour co-ordinated lounge scatter cushions
- TV point to master bedroom
- LED lamps to most light fittings
- USB charging ports
- Sliding patio doors to front elevation
- Bluetooth music centre

### POPULAR OPTIONAL EXTRAS

- Environmental exterior with colour co-ordinated uPVC windows and doors
- Choice of external claddings in various colours
- Integrated washing machine (not all models)





▲ Millfield 38, 2 bedrooms (12'6" wide)



▲ Millfield 39, 3 bedrooms (12'6" wide)



# MILLFIELD

## UNWIND IN LUXURY AND ELEGANCE

With open plan, inventive new layouts that are wider than standard leisure homes, and two or three bedrooms to choose from, the Millfield really has it all. Relax in your spacious lounge enjoying the panoramic view of your favourite location from the sliding patio door, then enjoy a relaxing sleep in your luxurious SoCozeed bed.

## MAIN FEATURES

- 12' 6" wide
- Externally vented cooker hood with light
- Coffee table
- Close-coupled ceramic toilet(s) with dual flush
- Vaulted ceilings throughout
- Steel pantile peaked insulated roof
- Voile curtains to most windows
- Domestic gutters with rainwater fall pipes
- Galvanised corner steadies & tow bar with front and rear use
- Winter insulation pack
- Colour co-ordinated lounge scatter cushions
- TV point to master bedroom
- External light
- Freestanding under counter fridge
- USB charging points to lounge & bedrooms
- LED lamps to most light fittings
- Bathroom fan
- Front opening sliding patio door
- Feature window side panel to dinette area

## POPULAR OPTIONAL EXTRAS

- Anthracyte uPVC double glazing with Low-E Glass
- Combi boiler central heating with room thermostat control
- Environmental exterior with colour co-ordinated uPVC windows and doors
- Fully galvanised Fusion chassis
- Choice of external claddings in various colours
- Integrated dishwasher or washing machine
- Integrated fridge/freezer
- Integrated microwave





▲ Belmor 33, 2 bedrooms



▲ Belmor 36, 2 bedrooms



▲ Belmor 38, 2 bedrooms



▲ Belmor 39, 3 bedrooms



## BELMOR

### HOLIDAY HOME LIVING AT ITS BEST

Brand new for 2018 - the Belmor's generous open plan living space is a key feature in its creative new design, with all layouts featuring front opening double doors. Combining practical features and ample storage space with stylish design, we're sure families and couples alike will love this bright and modern new range.

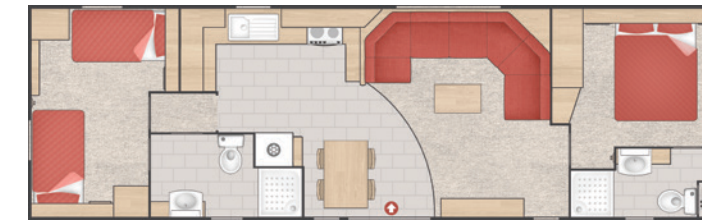
### MAIN FEATURES

- Front opening double doors
- Modern electric fire
- Externally vented cooker hood with light
- Coffee table
- Close-coupled ceramic toilet(s) with dual flush
- Vaulted ceilings throughout
- Steel pantile peaked insulated roof
- Voile curtains to most windows
- Domestic gutters with rainwater fall pipes
- Galvanised corner steadies & tow bar with front and rear use
- Winter insulation pack
- Colour co-ordinated lounge scatter cushions
- TV point to master bedroom
- External light
- Freestanding under counter fridge
- USB charging points to lounge & bedrooms
- LED lamps to most light fittings
- Bathroom fan

### POPULAR OPTIONAL EXTRAS

- uPVC double glazing with Low-E Glass
- Combi boiler central heating with room thermostat control
- Environmental exterior with colour co-ordinated uPVC windows and doors
- Fully galvanised Fusion chassis
- Choice of external claddings in various colours
- Integrated fridge/freezer
- Integrated microwave





▲ Belmor 38, 2 bedrooms



▲ Belmor 38, 3 bedrooms



## BELMOR CL CENTRAL LOUNGE

### DESIGNED WITH FAMILIES IN MIND

The central lounge living area in the Belmor CL provides a perfect family gathering place, with plenty of breathing room between the two large bedrooms and two shower rooms. Central lounges continue to be a popular layout trend, available with two or three bedrooms, with a particularly spacious two bedroom model.

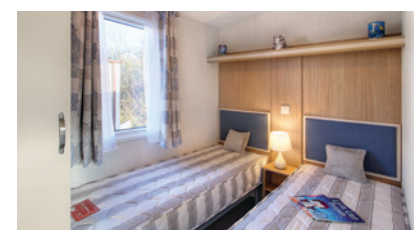
### MAIN FEATURES

- Side opening double doors
- Modern electric fire
- Externally vented cooker hood with light
- Coffee table
- Two shower rooms
- Close-coupled ceramic toilet(s) with dual flush
- Vaulted ceilings throughout
- Steel pantile peaked insulated roof
- Voile curtains to most windows
- Domestic gutters with rainwater fall pipes
- Galvanised corner steadies & tow bar with front & rear use
- Winter insulation pack
- Colour co-ordinated lounge scatter cushions
- TV point to master bedroom
- External light
- Freestanding under counter fridge
- USB charging points to lounge & bedrooms
- LED lamps to most light fittings
- Bathroom fan

### POPULAR OPTIONAL EXTRAS

- uPVC double glazing with Low-E Glass
- Combi boiler central heating with room thermostat control
- Environmental exterior with colour co-ordinated uPVC windows and doors
- Fully galvanised Fusion chassis
- Choice of external claddings in various colours
- Integrated fridge/freezer
- Integrated microwave





▲ Echo 28, 2 bedrooms



▲ Echo 33, 2 bedrooms



▲ Echo 36, 2 bedrooms



▲ Echo 36, 3 bedrooms



# ECHO

## BRINGING THE OUTDOORS IN

Enjoy a spacious leisure home created using our four brand new, innovative layouts. The Echo represents fantastic value with great standard features such as large panoramic windows, USB ports and beautiful contemporary fabrics. With ample storage throughout, the Echo is an ideal home for families or couples.

## MAIN FEATURES

- Panoramic front aspect
- Generous lounge seating area
- Carpet underlay throughout
- Modern electric fire
- Externally vented cooker hood with light
- Coffee table
- Close-coupled ceramic toilet(s) with dual flush
- Vaulted ceilings throughout
- Steel pantile peaked insulated roof
- Voile curtains to most windows
- Domestic gutters with rainwater fall pipes
- Galvanised corner steadies, tow bar with front & rear use
- TV point to master bedroom
- External light
- Freestanding under counter fridge
- USB charging points to lounge & bedrooms
- LED lamps to most light fittings
- Bathroom fan

## POPULAR OPTIONAL EXTRAS

- uPVC double glazing with Low-E Glass
- Combi boiler central heating with room thermostat control
- Environmental exterior with colour co-ordinated uPVC windows and doors
- Choice of external claddings in various colours
- Fully galvanised Fusion chassis
- Winter insulation pack
- Integrated fridge/freezer
- Integrated microwave
- Front opening double doors
- Colour co-ordinated lounge scatter cushions





▲ Torbay 35, 2 bedrooms



▲ Torbay 37, 3 bedrooms



## TORBAY

### COMBINING STYLE, QUALITY & VALUE

Value for money should not have to mean compromising on style, quality or comfort, and the Torbay proves this. This brand new model features a generous lounge with comfortable wrap-around seating and warm, welcoming décor with co-ordinated curtains and fabrics. The fully equipped kitchen has a fitted cooker, externally vented cooker hood and space for a free standing fridge/freezer, with storage space not usually found in a modern holiday home. All this adds up to make the Torbay a holiday home that is hard to beat.

### MAIN FEATURES

- Generous seating area
- Free standing table & chair set
- Coffee table
- Modern electric fire
- Close-coupled ceramic toilets with dual flush
- Vaulted ceilings throughout
- Steel pantile peaked insulated roof
- White domestic gutters with rainwater fall pipes
- Galvanised corner steadies & tow bar with front & rear use
- TV point in master bedroom
- External light
- Bathroom fan
- USB points to lounge & bedrooms

### POPULAR OPTIONAL EXTRAS

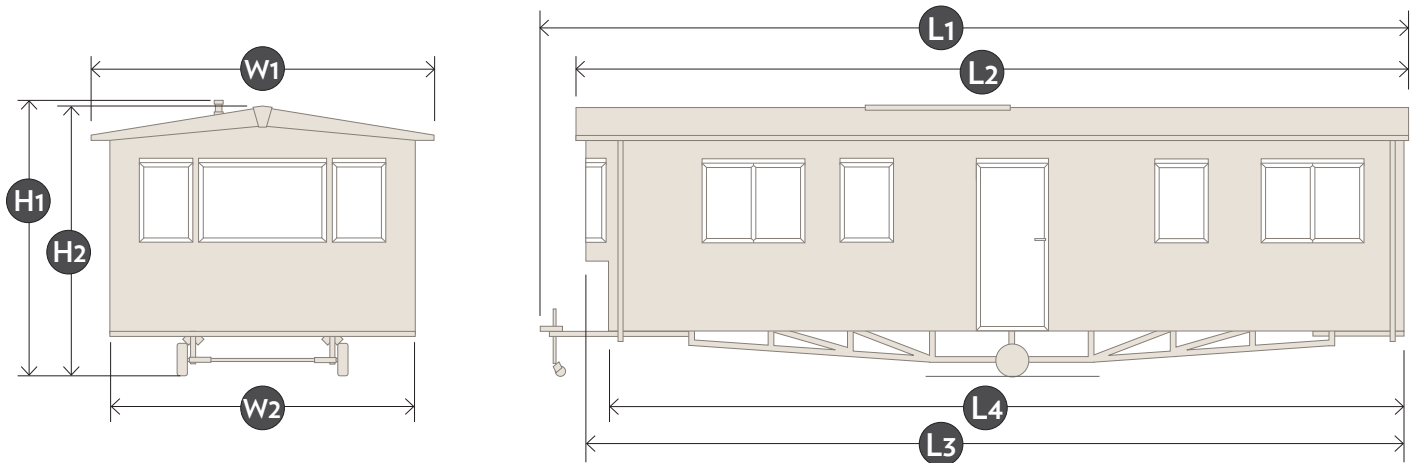
- uPVC double glazing
- Combi boiler central heating with room thermostat control
- Finesse electric radiator heating pack
- Integrated microwave
- Freestanding fridge/freezer
- Fully galvanised Fusion chassis
- Lounge pull out sofa bed
- Environmental green external cladding with windows to match
- Winter insulation pack



# MEASUREMENTS

## BECAUSE THE DETAILS MATTER

Before purchasing your Victory leisure home, we are sure you will want to know the exact measurements. The models are listed here in the order they appear in the brochure along with their page number to make them easy to find.

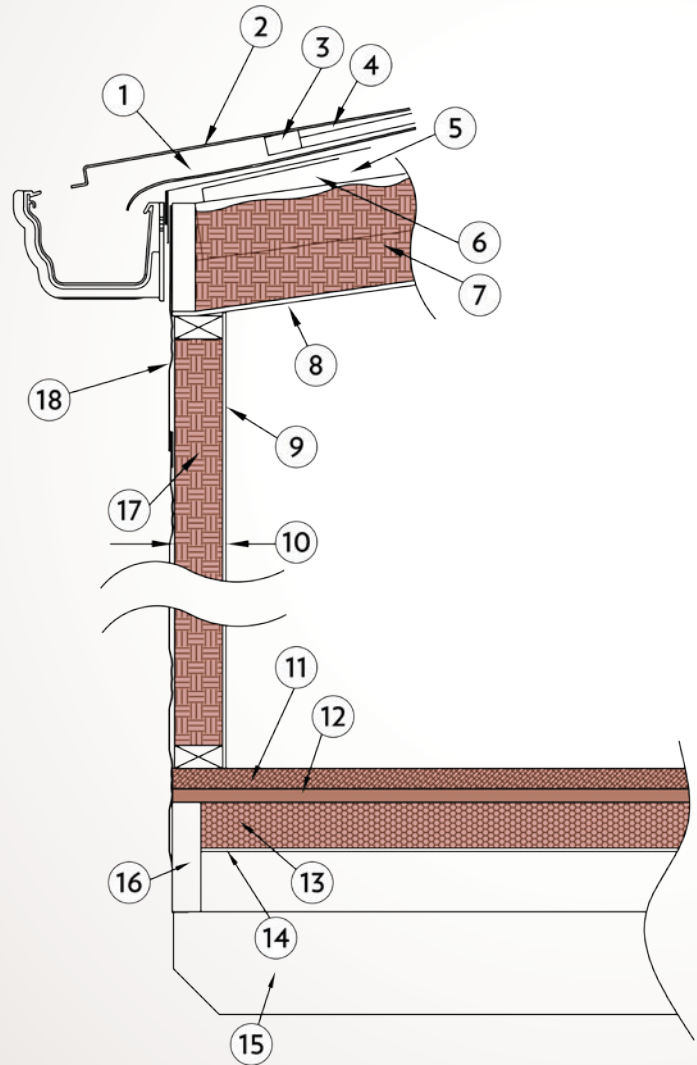


MODEL	PAGE	METRIC (METRES)							IMPERIAL (FEET & INCHES)						
		L1	L2	L3	L4	W1	W2	H1/H2	L1	L2	L3	L4	W1	W2	H1/H2
GROVEWOOD LUX 38 - 2 BED	4	13.13m	12.49m	12.16m	11.91m	4.24m	3.87m	3.62m	43'1"	41'0"	39'11"	39'1"	13'11"	12'8"	11'11"
GROVEWOOD LUX 40 - 2 BED	4	13.73m	13.09m	12.76m	12.51m	4.24m	3.87m	3.62m	45'1"	42'11"	41'10"	41'1"	13'11"	12'8"	11'11"
GROVEWOOD LUX 40 - 3 BED	4	13.73m	13.09m	12.76m	12.51m	4.24m	3.87m	3.62m	45'1"	42'11"	41'10"	41'1"	13'11"	12'8"	11'11"
MILLFIELD 38 - 2 BED	6	12.95m	12.29m	N/A	11.77m	4.24m	3.83m	3.62m	42'6"	40'4"	N/A	38'7"	13'11"	12'7"	11'11"
MILLFIELD 39 - 3 BED	6	13.35m	12.69m	N/A	12.17m	4.24m	3.83m	3.62m	43'10"	41'8"	N/A	39'11"	13'11"	12'7"	11'11"
BELMOR 33 - 2 BED	8	11.51m	10.91m	10.48m	10.33m	4.05m	3.68m	3.59m	37'9"	35'10"	34'5"	33'11"	13'3"	12'1"	11'9"
BELMOR 36 - 2 BED	8	12.42m	11.82m	11.39m	11.24m	4.05m	3.68m	3.59m	40'9"	38'9"	37'4"	36'11"	13'3"	12'1"	11'9"
BELMOR 38 - 2 BED	8	13.05m	12.45m	12.02m	11.87m	4.05m	3.68m	3.59m	42'10"	40'10"	39'5"	38'11"	13'3"	12'1"	11'9"
BELMOR 39 - 3 BED	8	13.35m	12.75m	12.32m	12.17m	4.05m	3.68m	3.59m	43'10"	41'10"	40'5"	39'11"	13'3"	12'1"	11'9"
BELMOR CL 38 - 2 BED	10	13.05m	12.30m	N/A	11.87m	4.05m	3.68m	3.59m	42'10"	40'4"	N/A	38'11"	13'3"	12'1"	11'9"
BELMOR CL 38 3 BED	10	13.05m	12.30m	N/A	11.87m	4.05m	3.68m	3.59m	42'10"	40'4"	N/A	38'11"	13'3"	12'1"	11'9"
ECHO 28 - 2 BED	12	10.08m	9.26m	N/A	8.83m	4.05m	3.68m	3.59m	33'1"	30'5"	N/A	28'11"	13'3"	12'1"	11'9"
ECHO 33 - 2 BED	12	11.58m	10.76m	N/A	10.33m	4.05m	3.68m	3.59m	38'0"	35'4"	N/A	33'11"	13'3"	12'1"	11'9"
ECHO 36 - 2 BED	12	12.49m	11.67m	N/A	11.24m	4.05m	3.68m	3.59m	41'0"	38'3"	N/A	36'11"	13'3"	12'1"	11'9"
ECHO 36 - 3 BED	12	12.49m	11.67m	N/A	11.24m	4.05m	3.68m	3.59m	41'0"	38'3"	N/A	36'11"	13'3"	12'1"	11'9"
TORBAY 35 - 2 BED	14	12.06m	11.37m	11.16m	10.94m	4.05m	3.68m	3.47m	39'7"	37'4"	36'7"	35'11"	13'3"	12'1"	11'5"
TORBAY 37 - 3 BED	14	12.69m	12.00m	11.79m	11.57m	4.05m	3.68m	3.47m	41'8"	39'4"	38'8"	37'11"	13'3"	12'1"	11'5"

# CONSTRUCTION

## METICULOUSLY BUILT TO THE HIGHEST STANDARDS

All of our models are built by our skilled craftspeople at our modern, purpose built facility in Gilberdyke, East Yorkshire. At our 8,000 square foot energy-efficient factory, we produce more than 1,000 units every year for families all over the UK, Europe and beyond.



1. 4mm ABA Single Bubble Laminated Reflective Foil Membrane Insulation
2. Steel Pan Tile Roof Sheets
3. Timber Rock Laths
4. 25mm Average Air Gap
5. Timber Pre-Fabricated Roof Trusses
6. 100mm Average Air Gap
7. 100mm Glass Mineral Wool Insulation\*
8. 4mm Vinyl Laminated Hardboard
9. 3.4mm Vinyl Laminated Decorative Wallboards
10. 47mm Wall Thickness (Excluding Cladding)
11. 18mm V313 Chipboard Floor
12. 10mm Natural Fibre Insulation Board
13. 40mm Expanded Polystyrene Insulation\*
14. 5mm Plywood\*
15. Steel Chassis
16. 96mm x 25mm Timber Joist
17. 44mm Glass Mineral Wool Insulation
18. Aluminium, Plastic or Timber Log Cladding

\*Not standard on Torbay/Echo

# TWO YEAR WARRANTY

## PEACE OF MIND WHEN BUYING YOUR HOME

The combination of solid construction and evolutionary design integrated with comfort and function, demonstrates the depth of knowledge and experience that the management and staff of Victory Leisure Homes have gained over many years working in the leisure home industry.

This underpinning gives us the confidence to offer a two year warranty to all purchasers in the UK subject to certain terms and conditions.

The full warranty is available online at [www.victoryleisurehomes.co.uk](http://www.victoryleisurehomes.co.uk), or you can ask for a printed copy by sending a stamped addressed envelope to the address on the back page.

For purchasers outside of the UK, please refer to your supplier for warranty details.

The warranty available is additional to and does not affect your statutory rights under consumer legislation.



▲ Our production facility in East Yorkshire

All dimensions are shown in metres (m) and imperial (feet / inches). All measurements are approximate and rounded to the nearest mm or inch. They could vary slightly due to the nature of the materials used, although the variance should not be significant. Please note that the floorplans throughout the brochure are indicative of the general layout only. They are not totally to scale and do not represent fully the shape and style of furniture and fittings or the detail of content.





# CUSTOMISATION

## PERSONALISE YOUR LEISURE HOME WITH OPTIONAL EXTRAS

With Victory you don't just get a stylish, great value leisure home, you can also personalise any of our models to create a leisure home that really is unique to you. Before you decide on your optional extras though, make sure you know the standard specification of your chosen model, as some options may be included already. Our optional extras available include:

- ▶ Central heating with condensing combi boiler

▶ Finesse electric radiator heating pack

▶ Low Energy uPVC double glazing

▶ Fully galvanised chassis

▶ Winter additional floor & roof insulation

▶ Integrated 70/30 fridge/freezer\*

▶ Integrated microwave\*
- ▶ Integrated dishwasher\*

▶ Integrated washing machine\*

▶ Double front doors\*

▶ Lounge scatter cushions

▶ Bedding sets

▶ Choice of external claddings & matching windows

▶ Space saving fold-under bed to any twin bedroom\*\*

\*Not available in some models where layout does not allow. \*\*Not in conjunction with the SoCoze mattress.



External cladding ▲



Fully galvanised chassis & insulation ▲



Electric radiator ▲



USB ports ▲

# IMPORTANT INFORMATION

## THINGS TO KNOW BEFORE BUYING YOUR LEISURE HOME

In order for any Victory leisure home to be used, it needs to be correctly sited, have steps or other means of entry and be connected to services (an appropriate propane gas supply, mains electricity to suit the required wattage off-take, mains water at a pressure to suit the appliances and a waste water/sewage outlet).

Most models can be powered by mains electricity only, although some layout changes will be necessary. Victory recommends that you do not use the product for residential occupancy. All Victory leisure homes are built to comply with many European and British Standards and all relevant codes of practice required by the National Caravan Council Certification Scheme and those endorsed by The British Holiday and Home Parks Association. These include the recommendation that caravan holiday homes should only be used for temporary holiday occupancy.

The sizes given are reasonably accurate shell measurements, but if your chosen pitch has size limitations or obstructions, you should consult with your park operator or dealer to establish specific sizes.

Illustrations, photographs, descriptions, information and statements contained in any Victory Leisure Homes Ltd. literature are intended only as a general guide. They are relevant to the product at the time of writing and production. Victory Leisure Homes Ltd. reserves the right to change any materials, fittings, sizes etc. at any time and without prior notice as supply, product development or legislation conditions demand. The matching and lining-up of patterns on wall-boards and fabrics is not always possible because of the caravan design and methods of construction.

Some of the items photographed (some refrigerators, fridge/freezers, microwaves, televisions, media players, some soft furnishings for beds and general props) are for illustration purposes only. Please refer to your park or dealer if you need clarification.

All Victory leisure homes are built to meet the requirements of EN1647 for snow loading categories A & B provided that the caravan is sited as recommended in the relevant code of practice for siting.

Please note: the description given for some features is not always applicable to every model within any range as there may be legal, technical or layout requirements that may create the need to alter or leave out the stated feature. Also, any item pictured may be different in size or style in other models within the range. Please be aware that supplied appliances and fittings may vary from those described as manufacturers may change, update or make obsolete and introduce new models. Such changes are beyond our control and we draw your attention to the fact that we reserve the right to change as these supply implications take effect. If any feature is critical to your purchasing decision, it would be wise to check beforehand exactly what is supplied with your chosen model.

Victory

## THE LODGE COLLECTION

### LUXURY LODGES THAT EMANATE STYLE AND ELEGANCE

At Victory our philosophy is based on a real desire to provide elegant, best-quality lodge homes at affordable prices, backed up with a high standard of service.

Our 2018 Lodge Collection consists of 13 lodges with a choice of 13ft, 16ft or 20ft widths, presenting new design features and colour combinations. Each model has a different design inspiration, not only for style, but for practical and comfortable living. Our approach is discreet yet elegant with natural tones and modern colours designed to work together. Add to this an extensive list of appliances and features and you will see why all of our lodges are truly luxurious.

#### PARKVIEW

40x16 2 bed • 40x16 3 bed • 29x20 2 bed • 36x20 2 bed • 40x20 2 bed  
40x20 2 bed CL • 41x20 3 bed • 46x20 4 bed

#### MONACO

41x13 2 bed

#### MONACO DUO

40x20 2 bed • 41x20 3 bed

#### VERSAILLES

40x20 2 bed • 41x20 3 bed







Victory Leisure Homes Ltd.  
Broad Lane | Gilberdyke | East Yorkshire | HU15 2TS

01430 471 200  
[www.victoryleisurehomes.co.uk](http://www.victoryleisurehomes.co.uk)  
[sales@victoryleisurehomes.co.uk](mailto:sales@victoryleisurehomes.co.uk)

